

Location #1 See VR tour and video catalogue

SAMURAI HOUSE

Soeda-machi, Tagawa-gun, Fukuoka

サムライハウス

- Walking through the main gate into the beautiful Japanese garden with two koi ponds, a waterfall, mountain moss and a 3-ton Japanese green marble table with 8 stone settings, adds flavor to the stunning first impression of the double tiered pitched gable “irimoya” roof , normally seen in castle architecture.
- The Irimoya roof is adorned with the crest of the samurai house at every corner and intersecting part that rises to the tall spine of the roof. Even the spine, or omune, bares the crest of this incredible samurai manner.
- **The Osetsuma**
(20 Tatami main rooms with walk-around corridor)
- With wood work by legendary Miyadaiku craftsmen and colored sand walls, these main rooms are a fit for many types of scenes. The Shoji sliding doors can all be removed to open the space into the natural setting of the garden outside. Adorned with edo-period buddhist status and samurai armor the authenticity of historical legacy is undeniable on camera.
- The expansive, well-manicured Japanese garden is situated on a sloped hillside that provides a contained field of view on camera, and highlights the stunning change of all four seasons. This Japanese garden has a stone walkway that ascends into the mountain forest and into a second more expansive garden above the waterfall, adding to the number of shooting location options within this property.



SAMURAI HOUSE

- The look of Samurai House represents the highest rank of Japanese craftsmanship and works well as a 16th century Samurai manner or, the quintessential modern-day luxury compound of a Boss-like character. There are modern appointments such as a 200inch screening room, modern restroom facilities, a 100sqft bath, large kitchen, meeting rooms and 1GB wifi throughout.
- The second of three parking lots is hidden away off-camera just outside the main gate, and can accommodate a tented video village/holding/VIP area, etc... as well as parking for 6 cars (total parking: 20 cars, 4 trucks, generator truck)

Japanese Tea House

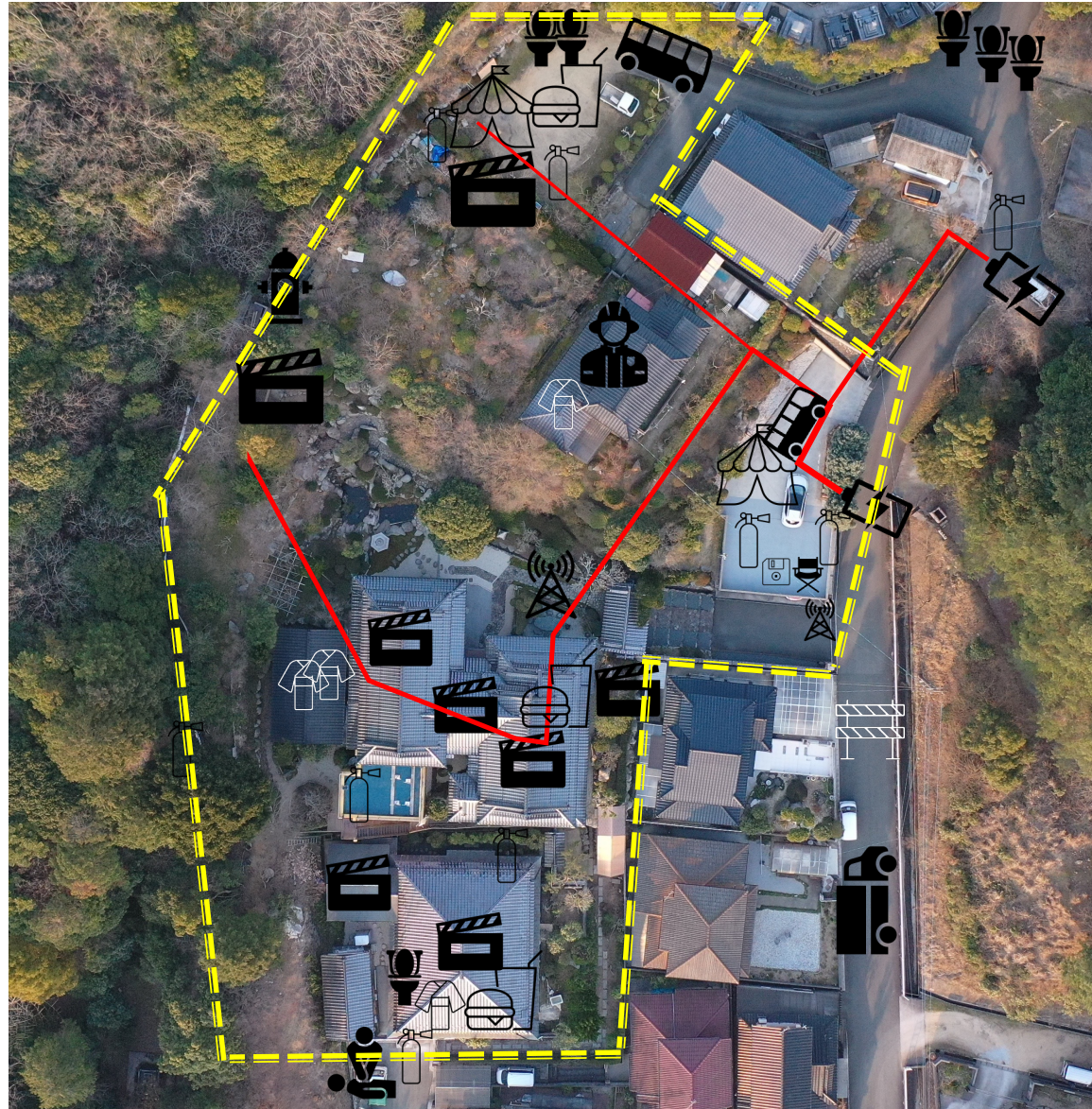
- A rare, traditional tea house makes up the corner section of the detached guesthouse that's connected by an exterior copper-roof wooded staircase, also built in the traditional style. The guesthouse can serve as a luxurious production office, or accommodations and even has a wooden Japanese bath... Hinoki Buro.



SAMURAI HOUSE

SITE MAP

- 4-TON TRUCKS
- Micro Buses
- Generators
- StarWaggon
- Cars
- Wardrobe
- Crafty
- DIT
- Holding
- Video Village
- FSO
- Hair / Make-Up
- Honey Wagons





LOCATION:
SAMURAI
HOUSE &
TEA HOUSE
SOEDA-MACHI
FUKUOKA

侍
ハウス・
茶屋

Samurai house & Tea House

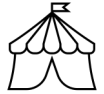
Location Site Map Key

Line Key:

Site Perimeter 
 Power Cables 



Shooting Locations



Video Village / Crafty / Holding



DIT / CC / ED



Director / Client Monitors



Wardrobe / HMU



Avialable WIFI Router



Fire Extinguisher



FSO -Fire Safty Officer



Craft Services



Fire Hydrant / Water Source



Location Van / PU Points



4-Ton Truck Accessable



Honey Wagon / Toilets



Generator Locations



Lock-Down



First Aid / Set Medic

