

GYOUJADO

行者堂 Koishiwara, Toho-mura, Fukuoka

A small but unique mountain shrine for Yamabushi, complete with a very rare round stone structure 1.3 meters high and 2m round used for secret Yamabushi fire rituals. The well contained site includes a small shrine, yard clearing, very rare wooded Torii gates, stone passageway and is connected to the famous ONISUGI. A small group of the largest cedar trees in Japan.

Only 200m off route 505 in Toho-mura, this 14th century Yamabushi mountain shrine is easily accessible and can accommodate small, medium and large size productions.

Deep in the land of Tengu and Mountain Demons, nestled between the largest Cedar trees in Japan on the oldest Shugendo Yamabushi mountain passages that lead to Hikosan, is a temple/shrine site where warrior monks would practice purification and fire rituals before gaining entrance to the sacred mountain region of Hikosan.

A designated Important Tangible Cultural Site by Fukuoka Prefecture, this beautiful location provides historical authenticity and an old-world Japanese aesthetic look.



GYOUJADO

Location Logistics Statement

There is a small road that can be closed off for production vehicles and an adjacent larger road can also be closed off to accommodate larger productions.

Some of the amazing high-lights in this location include;

- Stone paved main entrance ascending to the shrine.
- Several natural Yamabushi mountain passages and trails leading to, and situated around the shrine area.
- Legendary ONISUGI cedar tree forest. (4.7 hectares) -Tricked by Yamabushi monks, a band of mountain demons were turned into trees, and are among the largest in Japan.
- No modern structures or electrical poles within camera view
- Wooden Torii gates. Ancient wooden Torii gates leading to the small shrine give a unique authenticity to site and are rarely found anywhere in Japan.
- No modern hand rails
- Removeable wood and rope foot path markers around sacred giant trees.oad with moderate levels of traffic including heavy trucks.

It can accommodate a small basecamp, DIT, Wardrobe, Video Village, Crafty, Dailies, Hair/Make-up, Talent holding, etc...

There are roadside locations to park generators trucks and portable bathrooms near



- 1) The exterior facade of the house is authentic and has a mud packed perimeter framed in stone. The handcrafted wood work above the entry way and along the front of the house make the status of this home perfect for upper class nobility, a traditional Japanese Ryokan (Inn), country residence, etc... There are no modern handrails visible.
- 2) Ample parking for crews of medium size. Large trucks, generators, motorhomes, Star Wagons can also be accommodated at another location just 5 minutes away.
- 3) Local Samurai AND Ninja stunt team available.
- 4) Newly converted hotel and camping facility with rehearsal halls, basketball court, large cafeteria, outdoor BBQ pits and sports field, 5-minutes away for up to 400 people. 8 rooms available for VIP accommodations.
- 5) Free shuttle service provided from accommodations to location basecamp for all large productions (Inquire please)
- 6) 24hr food/crafty services available (notice required)
- 7) Props available (authentic interior props and staging available at location)
- 8) Kitchen & Hot meal service and Japanese Bento Boxes available near location.
- 9) Overnight Express Delivery Services available directly to basecamp.
- 10) Segregated Bathrooms, wheelchair access facilities available at basecamp.
- 11) There are three above ground powers line (black) that connect to the south side of the house that are within camera view. (See VR Tour)
- 12) There are western-style modern buildings 20 meters away that need to be blocked out of frame during exterior shooting. (See VR Tour)

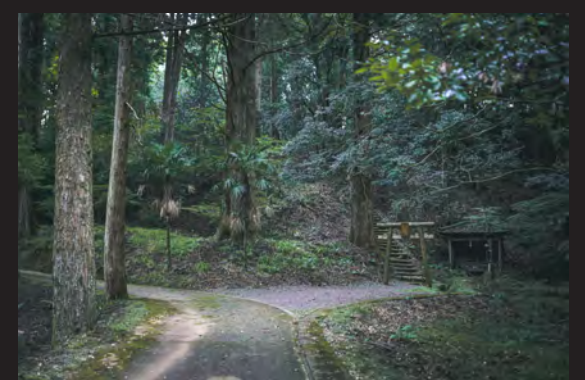


- 13) GYOJA-DO Shrine, Onisugi (Giant Cedar) and mountain passages all just 5 min away can provide multiple changes of location.
- 14) Real Japanese mountain moss covering ground, stones, trees add to the intensely authentic look that pushes the green spectrum.
- 15) BG actor pool locally with period wardrobe.
- 16) Local Casting services available (bi-lingual CD)
- 17) Period costume and wardrobe department available locally.
- 18) Hollywood bi-lingual production coordinators available locally.
- 19) Rental gear available locally. (inquire for full list)
- 20) Ground transport & VIP transport available locally.
- 21) Closest International Airport: FUKUOKA, INTERNATIONAL (1hr 20min by car)
- 22) Basecamp First Aid / AED / Medical services available
- 23) Closest Hospital: 20min (2 hospitals in local area)
- 24) On-site firefighting equipment
- 25) Local Helicopter evac to major trauma centers available
- 26) WIFI throughout basecamp location and accommodations.
- 27) Full site / Area lock-down requests can be accommodated (Inquire please)
- 28) Pyrotechnics (poppers / squibs, etc..) and permits available locally!



- 29) Cinematic Drone services available locally with permits and insurance. Permission coordination for foreign drone teams available. (See drone reel for this location)
- 30) Full Japanese & International production insurance services available through on-site coordinator (inquire please)
- 31) SAG-AFTRA accounting services for local hires available.
- 32) SAG-AFTRA Signatory Local Production Company available.

NOTE: There are no nearby international banking facilities. Local vendors require cash transactions which can be accommodated by the on-site local production coordinator on your behalf.



GYOUJADO

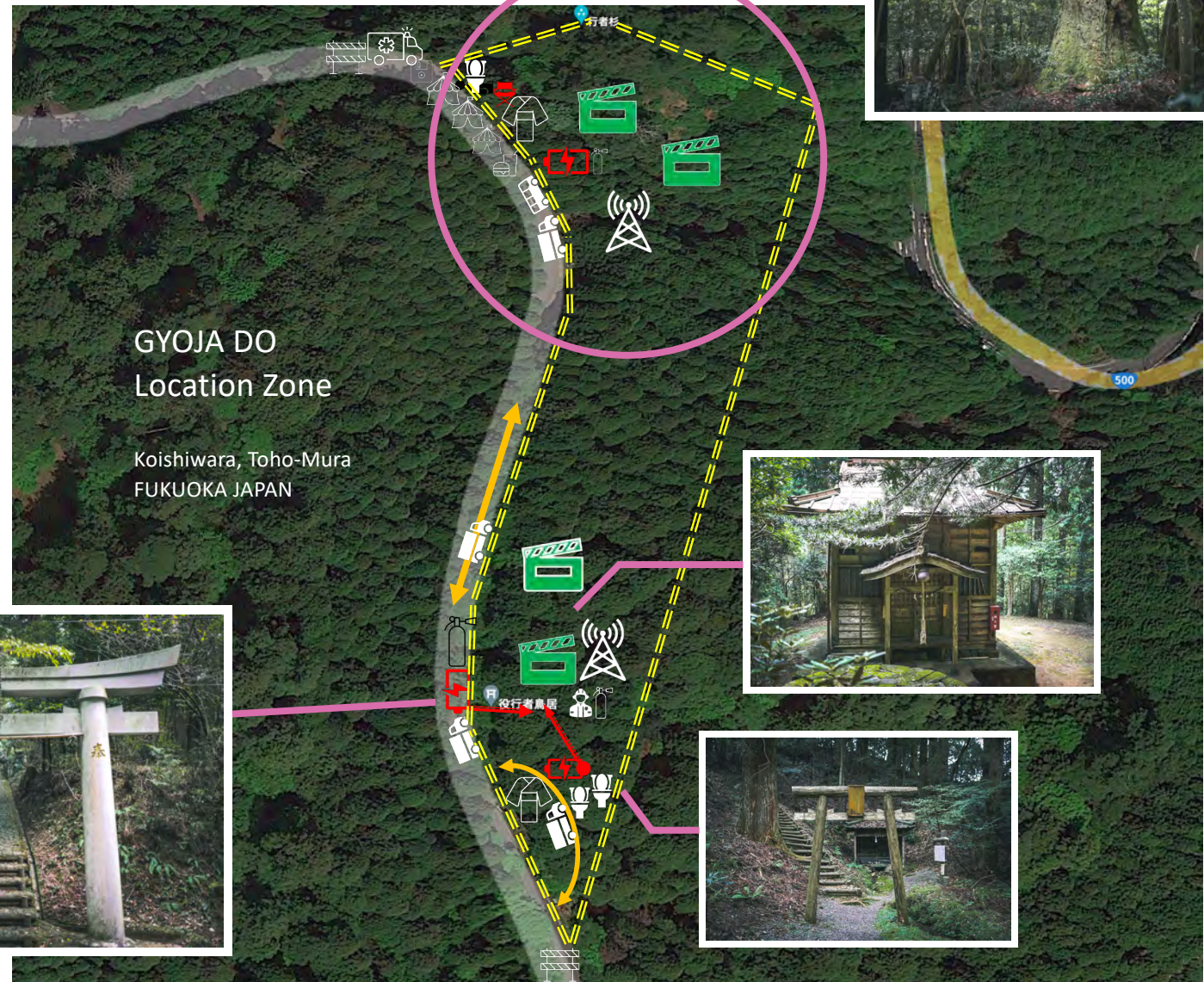
Location Site Map

GYOJA DO & GYOJASUGI

Is in a mountain area off a small road just 200m from the main route 500 in Koishiwara.

Road closure and traffic management can be arranged for productions that require tents, starwaggon and trucks to stay on the road near each site. These arrangements although not costly, do required some lead time so please contact us as soon as this location is on your radar so we can be sure everything is covered.

There are MANY Yamabushi mountain trails in the shooting zone to augment your scenes. Please have a look at our sample Musashi scene video to see how they look!





GYOUJADO


Location Site Map

GYOJA DO / GYOJASUGI Location Site Map Key

Line Key:

Site Perimeter 

Power Cables 

Access Roads 



Shooting Locations



Video Village / Crafty / Holding



DIT / CC / ED



Director / Client Monitors



Wardrobe / HMU



Avialable WIFI Router



Fire Extinguisher



FSO -Fire Safty Officer



Craft Services



Fire Hydrant / Water



Location Van



4-Ton Truck Accessable



Honey Wagon / Toilets



Generator Locations



Lock-Down



First Aid / Set Medic

